

HNU VPN

(Virtual Private Network)

Install the VPN Client from the web

(If the VPN client is already installed, go to **Connect to the VPN** below):

(Note: You will need Administrator rights to your computer to install the VPN Client)

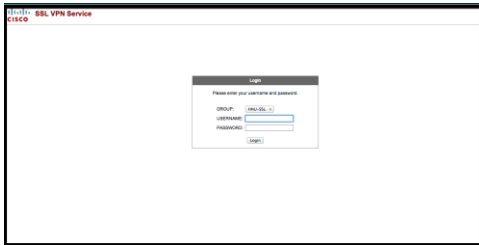
1. In a browser window go to <https://12.192.225.12>

2. Enter your HNU credentials:

Group= ***HNU-SSL***

USERNAME= <*your username*> (your HNU email ID, the part BEFORE “@hnu.edu”)

PASSWORD= <*your HNU email password*>



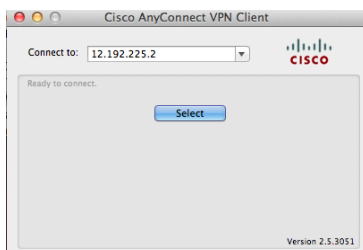
3. Follow the prompts to download the Cisco AnyConnect VPN Client for your OS.

4. Install the Cisco AnyConnect VPN Client on your Apple or Windows computer.

Connect to the VPN (Start here if you have already installed the VPN Client software):

1. Launch the Cisco AnyConnect VPN Client .

2. Enter the IP address (***12.192.225.12***) in the **Connect to:** box and press **Select**.



3. Enter your HNU credentials when prompted and click on **Connect**.

Domain= ***hnu***

USERNAME= <*your username*> (your HNU email ID, the part BEFORE “@hnu.edu”)

PASSWORD= <*your HNU email password*>

Disconnect from the VPN when you are done accessing the network drives.

You can always re-connect to the VPN if you need to re-access the network drives.

Note: Reading and/or saving files over the VPN will take longer than when you are on-campus.

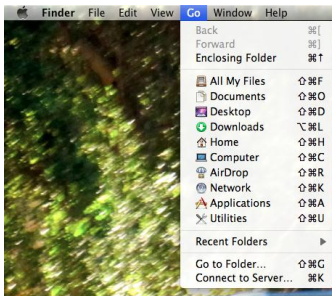
To access COMMON and personal network drives:

For Windows 7:

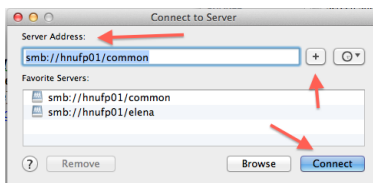
1. Click on the **Start** button
2. Right-click **Computer**, select **Map network drive...**
3. In the **Drive:** drop-down box, select a drive letter.
(for example, **W:** for COMMON, **V:** for personal drive)
4. In the **Folder:** box type:
\\hnufp02\COMMON or
\\hnufp02\your username (your HNU email ID, the part BEFORE “@hnu.edu”)
5. Put a Check Mark next to **Connect using different credentials**
6. Click on **Finish**
7. In the “Windows Security” dialog box:
User name= <your username> (your HNU email ID, the part BEFORE “@hnu.edu”)
Password= <your email password>
Click on **OK**

For Apple OS X:

1. In Finder click **Go** menu item, select **Connect to Server** (see screen shot)



2. In the **Server Address:** box enter
smb://hnufp02/common or
smb://hnufp02/your username (your HNU email ID, the part BEFORE “@hnu.edu”)
3. Click the **+** (plus sign) after to the Server Address box to save the address
4. Click the **Connect** button



Disconnect from the VPN when you are done accessing the network drives.

You can always re-connect to the VPN if you need to re-access the network drives.

Note: Reading and/or saving files over the VPN will take longer than when you are on-campus.