



HOLY NAMES
UNIVERSITY

Since 1868

2018-19
FACT BOOK

Table of Contents

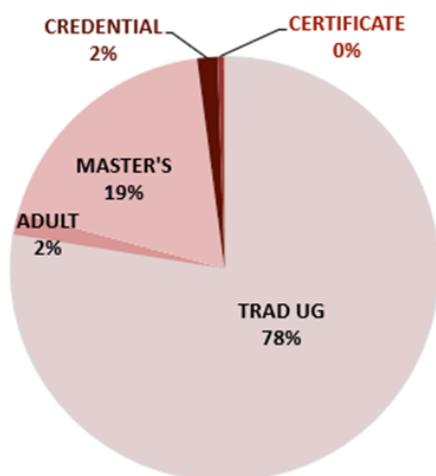
REPORT NAME	Page
A. ENROLLMENT	
Facts about Holy Names University	1
Enrollment Graph (Fall and Spring Semesters), Fall 2012 to Fall 2018	2
Fall Enrollment Graph, 2008-Present	3
Fall Enrollment and FTE, 2008 -Present	4
Freshmen Applicants, Admits, and Enrolled Students Trend	5
Admission Summary: Undergraduate	6
Admission Summary: Graduate	7
New Freshman Academic Profile	8
First Year (IPEDS) Student Profile	9
New Transfer Student Profile	10
New Adult Student Profile	11
B. STUDENTS	
Student Gender Profile	12
Student Ethnicity Profile	13
Class Size Comparison	14
D. RETENTION AND GRADUATION	
Degree Report	15
HNU Graduation by Degrees Graph	16
Retention and Graduation Summary	17
Graduation Rate Trend	18
Retention Rates of New Students	19
Retention Rates of Continuing Students	20
F. TUITION AND FEES	
Annual Cost to Attend HNU	21
G. GLOSSARY	
Definitions and Descriptions of Terms Used in Fact Book	22-25

Facts about Holy Names University

Fall 2018 Census, data as of 9/27/2018

		Undergraduate	Graduate	Total
Student Body	First Year Cohort* - Fall 2018	180 (Avg. High School GPA 3.3; Avg. SAT Composite 996)		
	Enrollment (including Only Degree-seeking)	626	328	954
	Average Age	21	35	26
	Female Students	65%	79%	70%
	Racial and Ethnic Diversity	73%	62%	69%
	Students from California	92%	94%	93%
	States Represented	9	4	13
	Countries/Regions Represented	11	10	16
	International Students	3%	4%	3%
Faculty	Full-time	45 (female 64%, male 36%)		
	Part-time	111		
	Total	156		
Class Size	Average Lecture Class Size	17	11	15
	Lecture Class Enrollments of 20 or fewer students	66%	85%	71%
	Student-to-faculty ratio (Fall, UG)	10: 1		
Retention, Graduation (First Year Cohort*)	Second Fall Retention Rate	63%		
	4-year Graduation Rate (2014 cohort)	27%		
	6-year Graduation Rate (2012 cohort)	48%		

Student Unit Enrolled



Largest Majors

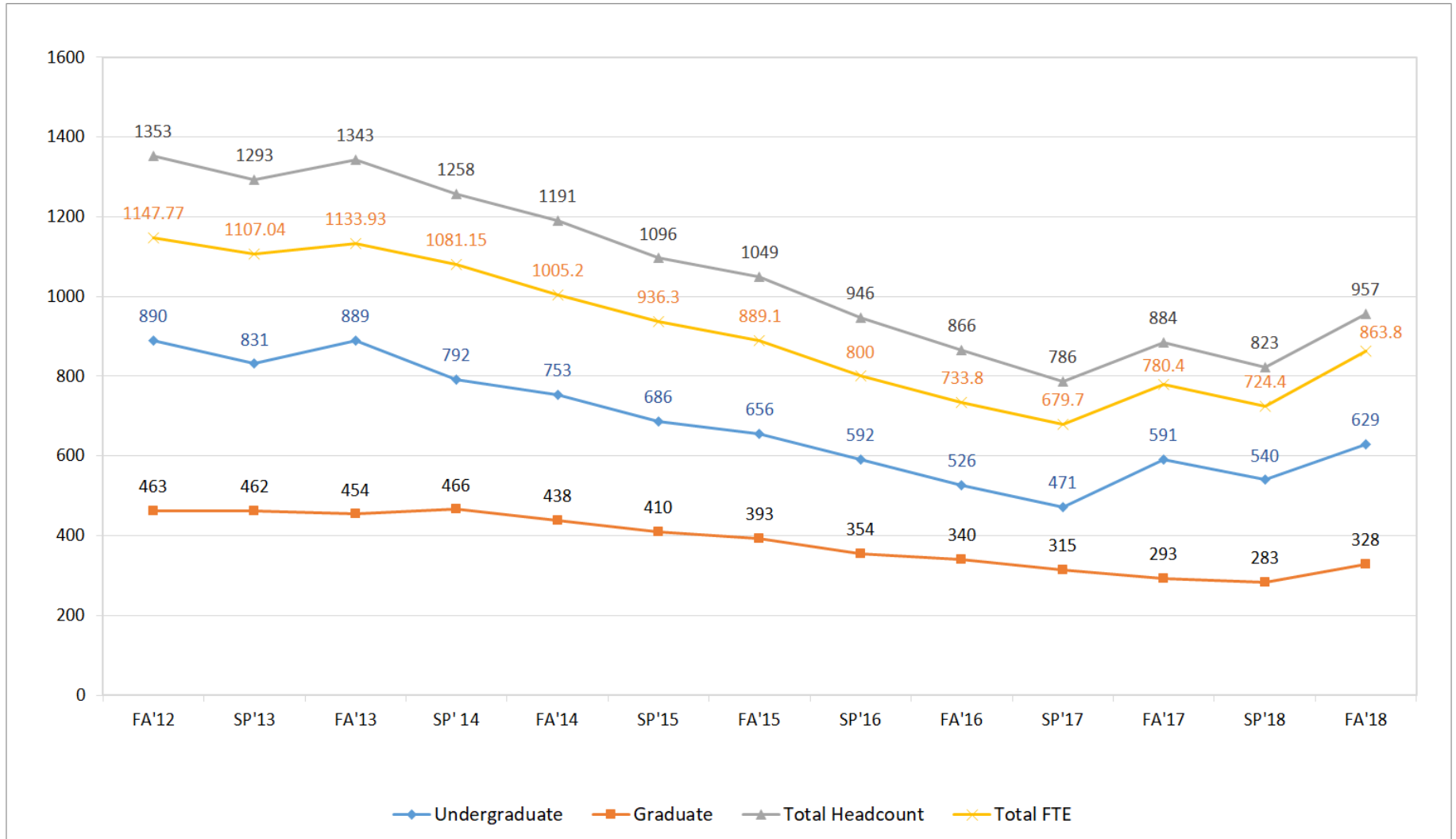
Undergraduate
Business
Psychology
Pre-Biology
Criminology
Pre-Nursing
Graduate
Education
Psychology
Nursing
Business

HNU Total Unit Enrolled (Fall 2018) = 9,349

(*) The incoming first-time full-time degree seeking undergraduates entering in fall (the initial cohort in graduation rate calculations)

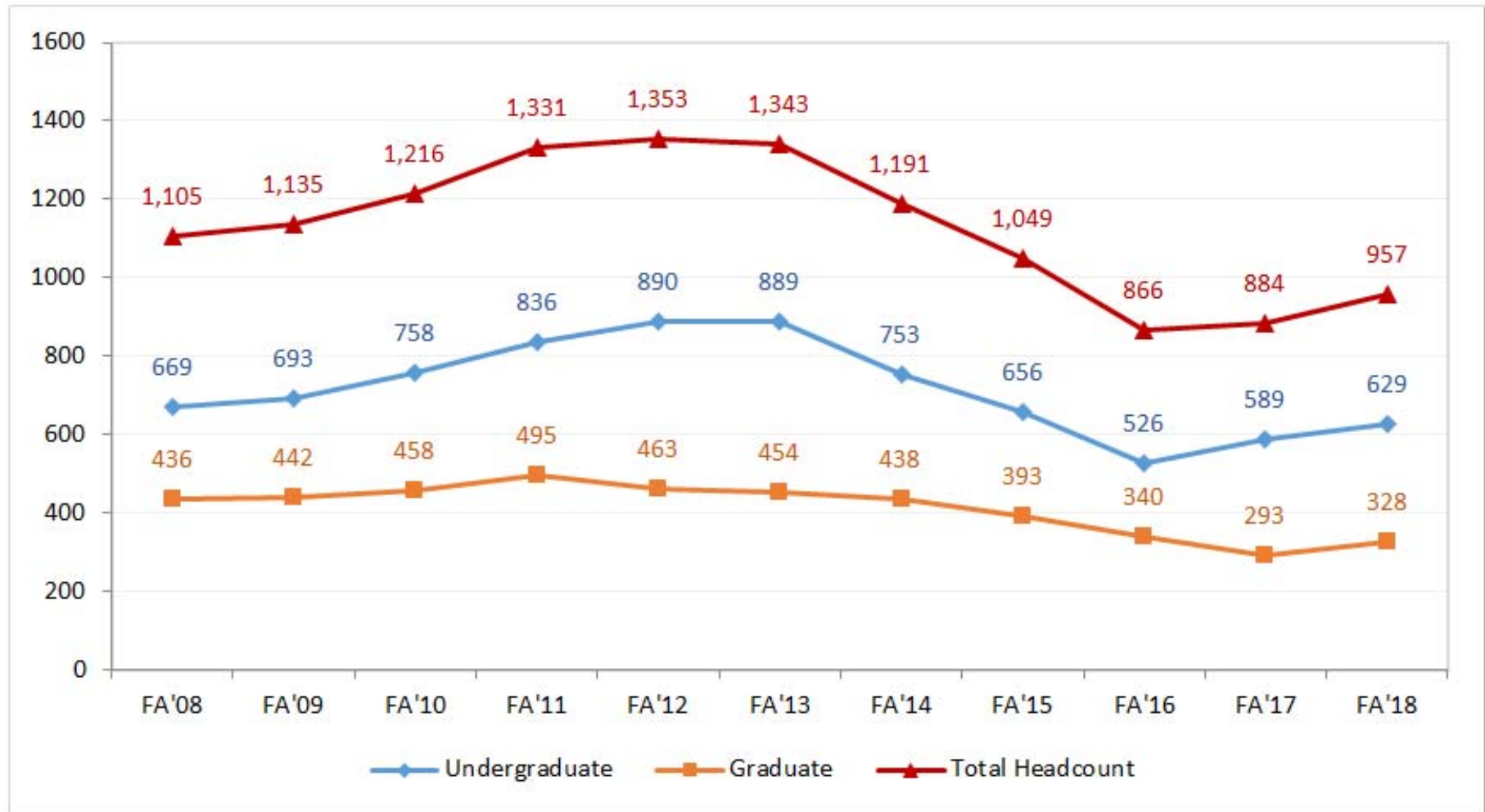
Holy Names University Enrollment – Fall and Spring Semesters

Fall 2012 to Fall 2018



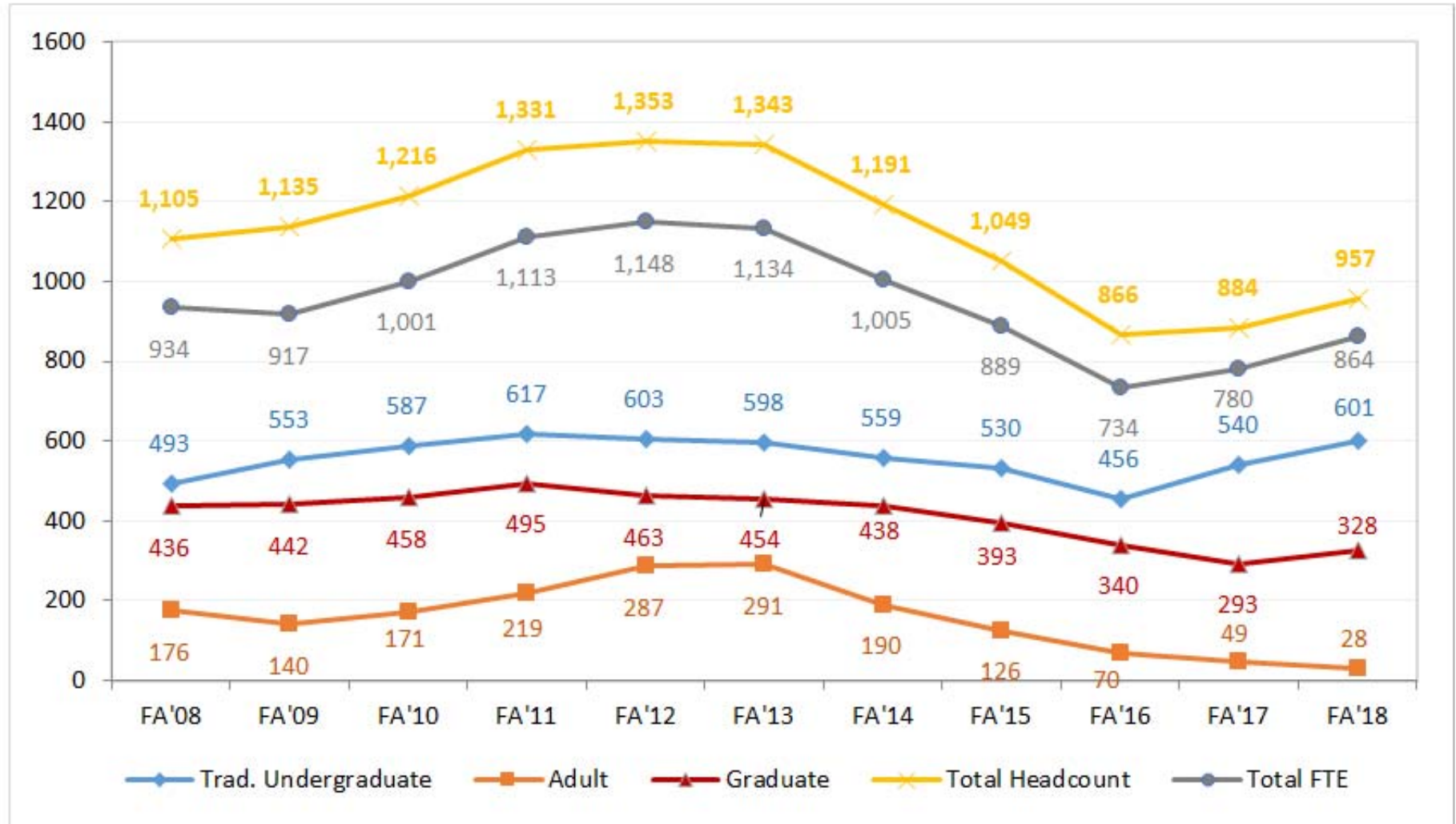
HNU Fall Enrollment (Fall Semesters Only)

Fall 2008 to Fall 2018



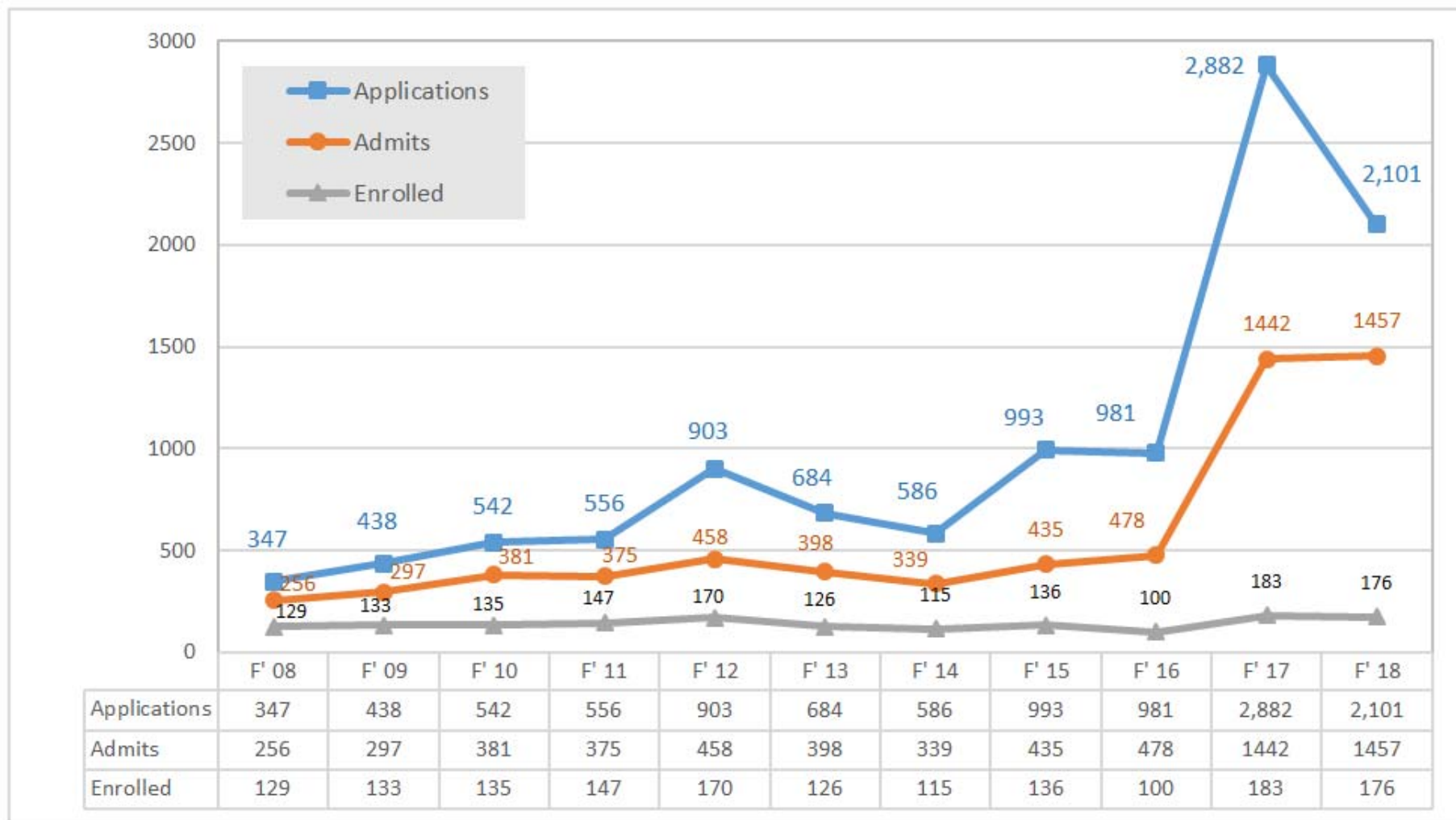
HNU Enrollment and Full Time Equivalent (Fall Semesters Only)

Fall 2008 to Fall 2018



Freshmen Applicants, Admits, and Enrolled Students Trend

Fall 2008 to Fall 2018



* Source: Applicant and Admit head counts are from Admissions data; Enrolled head counts are from Census data.

Admissions Summary

UNDERGRADUATE

UNDERGRADUATE		Fall 2014	Fall 2015	Fall 2016	Fall 2017	Fall 2018
Trad Freshmen	Applied	586	993	981	2,882	2,101
	Accepted	339	435	478	1,442	1,457
	<i>Acceptance Rate</i>	<i>57.8%</i>	<i>43.8%</i>	<i>48.7%</i>	<i>50.0%</i>	<i>69.3%</i>
	Enrolled	112	136	98	179	176
	<i>Yield Rate</i>	<i>33.0%</i>	<i>31.3%</i>	<i>20.5%</i>	<i>12.4%</i>	<i>12.1%</i>
Trad Transfers	Applied	200	191	189	245	383
	Accepted	105	97	96	113	131
	<i>Acceptance Rate</i>	<i>52.5%</i>	<i>50.8%</i>	<i>50.8%</i>	<i>46.1%</i>	<i>34.2%</i>
	Enrolled	51	48	47	61	56
	<i>Yield Rate</i>	<i>48.6%</i>	<i>49.5%</i>	<i>49.0%</i>	<i>54.0%</i>	<i>42.7%</i>
Trad UNDR Total	Applied	786	1184	1,170	3,127	2,484
	Accepted	444	532	574	1,555	1,588
	<i>Acceptance Rate</i>	<i>56.5%</i>	<i>44.9%</i>	<i>49.1%</i>	<i>49.7%</i>	<i>63.9%</i>
	Enrolled	163	184	145	240	232
	<i>Yield Rate</i>	<i>36.7%</i>	<i>34.6%</i>	<i>25.3%</i>	<i>15.4%</i>	<i>14.6%</i>
ABD	Applied	75	39	34	34	16
	Accepted	24	22	11	9	6
	<i>Acceptance Rate</i>	<i>32.0%</i>	<i>56.4%</i>	<i>32.4%</i>	<i>26.5%</i>	<i>37.5%</i>
	Enrolled	15	11	9	3	3
	<i>Yield Rate</i>	<i>62.5%</i>	<i>50.0%</i>	<i>81.8%</i>	<i>33.3%</i>	<i>50.0%</i>
RN/BSN	Applied	14	7	11	13	7
	Accepted	1	1	2	5	1
	<i>Acceptance Rate</i>	<i>7.1%</i>	<i>14.3%</i>	<i>18.2%</i>	<i>38.5%</i>	<i>14.3%</i>
	Enrolled	0	0	0	2	0
	<i>Yield Rate</i>	<i>0.0%</i>	<i>0.0%</i>	<i>0.0%</i>	<i>40.0%</i>	<i>0.0%</i>
LVN/BSN	Applied	7	0	0	0	0
	Accepted	0	0	0	0	0
	<i>Acceptance Rate</i>	<i>0.0%</i>	<i>NA</i>	<i>NA</i>	<i>NA</i>	<i>NA</i>
	Enrolled	0	0	0	0	0
	<i>Yield Rate</i>	<i>N/A</i>	<i>N/A</i>	<i>N/A</i>	<i>N/A</i>	<i>N/A</i>
TOTAL NEW UNDERGRADUATES		178	195	154	245	235

Source: Data from Admissions Funnel Reports

Admissions Summary

GRADUATE

GRADUATE		Fall 2014	Fall 2015	Fall 2016	Fall 2017	Fall 2018
Nursing	Applied	93	71	78	29	71
	Accepted	51	49	50	22	43
	<i>Acceptance Rate</i>	<i>54.8%</i>	<i>69.0%</i>	<i>64.1%</i>	<i>75.9%</i>	<i>60.6%</i>
	Enrolled	38	40	31	13	28
	<i>Yield Rate</i>	<i>74.5%</i>	<i>81.6%</i>	<i>62.0%</i>	<i>59.1%</i>	<i>65.1%</i>
MBA	Applied	37	36	31	43	38
	Accepted	19	19	21	21	23
	<i>Acceptance Rate</i>	<i>51.4%</i>	<i>52.8%</i>	<i>67.7%</i>	<i>48.8%</i>	<i>60.5%</i>
	Enrolled	12	11	16	15	16
	<i>Yield Rate</i>	<i>63.2%</i>	<i>57.9%</i>	<i>76.2%</i>	<i>71.4%</i>	<i>69.6%</i>
Pastoral Ministries (PMIN)	Applied	0	0	0	0	0
	Accepted	0	0	0	0	0
	<i>Acceptance Rate</i>	<i>N/A</i>	<i>N/A</i>	<i>N/A</i>	<i>N/A</i>	<i>N/A</i>
	Enrolled	0	0	0	0	0
	<i>Yield Rate</i>	<i>N/A</i>	<i>N/A</i>	<i>N/A</i>	<i>N/A</i>	<i>N/A</i>
Culture and Spirituality (SOPHIA)	Applied	13	5	1	0	0
	Accepted	6	3	0	0	0
	<i>Acceptance Rate</i>	<i>46.2%</i>	<i>60.0%</i>	<i>0.0%</i>	<i>N/A</i>	<i>N/A</i>
	Enrolled	5	1	0	0	0
	<i>Yield Rate</i>	<i>83.3%</i>	<i>33.3%</i>	<i>N/A</i>	<i>N/A</i>	<i>N/A</i>
Psychology	Applied	42	28	28	31	75
	Accepted	26	18	23	21	41
	<i>Acceptance Rate</i>	<i>61.9%</i>	<i>64.3%</i>	<i>82.1%</i>	<i>67.7%</i>	<i>54.7%</i>
	Enrolled	15	13	18	15	33
	<i>Yield Rate</i>	<i>57.7%</i>	<i>72.2%</i>	<i>78.3%</i>	<i>71.4%</i>	<i>80.5%</i>
Education	Applied	68	66	62	80	69
	Accepted	46	44	50	59	59
	<i>Acceptance Rate</i>	<i>67.6%</i>	<i>66.7%</i>	<i>80.6%</i>	<i>73.8%</i>	<i>85.5%</i>
	Enrolled	37	33	39	41	21
	<i>Yield Rate</i>	<i>80.4%</i>	<i>75.0%</i>	<i>78.0%</i>	<i>69.5%</i>	<i>35.6%</i>
Music	Applied	8	9	10	10	13
	Accepted	5	6	6	8	5
	<i>Acceptance Rate</i>	<i>62.5%</i>	<i>66.7%</i>	<i>60.0%</i>	<i>80.0%</i>	<i>38.5%</i>
	Enrolled	5	6	4	5	3
	<i>Yield Rate</i>	<i>100.0%</i>	<i>100.0%</i>	<i>66.7%</i>	<i>62.5%</i>	<i>60.0%</i>
English	Applied	2	10	3	2	0
	Accepted	0	5	1	0	0
	<i>Acceptance Rate</i>	<i>0.0%</i>	<i>50.0%</i>	<i>33.3%</i>	<i>0.0%</i>	<i>N/A</i>
	Enrolled	0	2	0	0	0
	<i>Yield Rate</i>	<i>N/A</i>	<i>40.0%</i>	<i>0.0%</i>	<i>N/A</i>	<i>N/A</i>
Unknown	Applied	84	0	0	1	2
	Accepted	0	0	0	1	0
	<i>Acceptance Rate</i>	<i>0.0%</i>	<i>N/A</i>	<i>N/A</i>	<i>100.0%</i>	<i>0.0%</i>
	Enrolled	0	0	0	1	0
	<i>Yield Rate</i>	<i>N/A</i>	<i>N/A</i>	<i>N/A</i>	<i>100.0%</i>	<i>N/A</i>
Total Graduate	Applied	263	225	213	196	268
	Accepted	153	144	151	132	171
	<i>Acceptance Rate</i>	<i>58.2%</i>	<i>64.0%</i>	<i>70.9%</i>	<i>67.3%</i>	<i>63.8%</i>
	Enrolled	112	106	107	90	101
	<i>Yield Rate</i>	<i>73.2%</i>	<i>73.6%</i>	<i>70.9%</i>	<i>68.2%</i>	<i>59.1%</i>
TOTAL NEW GRADUATES		112	106	107	90	101
TOTAL NEW STUDENTS		290	301	261	335	336

Source: Data from Admissions Funnel Reports

New Freshmen Academic Profile

TOTAL NEW FRESHMEN	Fall 2014		Fall 2015		Fall 2016		Fall 2017		Fall 2018	
	115		136		100		179		180	
SAT CRITICAL READING SCORE										
200s	2	1.7%	0	0.0%	1	1.0%	0	0.0%	0	0.0%
300s	27	23.5%	36	26.5%	18	18.0%	4	2.2%	8	4.4%
400s	46	40.0%	63	46.3%	45	45.0%	38	21.2%	51	28.3%
500s	21	18.3%	17	12.5%	16	16.0%	34	19.0%	54	30.0%
600s	2	1.7%	2	1.5%	2	2.0%	10	5.6%	10	5.6%
700s	0	0.0%	0	0.0%	0	0.0%	0	0.0%	2	1.1%
Unknown/Missing	17	14.8%	18	13.2%	18	18.0%	93	52.0%	55	30.6%
25th Percentile	390		390		400		460		450	
75th Percentile	480		480		490		560		540	
HNU AVERAGE	444		434		447		509		500	
California Average	496		495		480		531		540	
National Average	497		495		494		533		536	
SAT MATH SCORE										
200s	1	0.9%	2	1.5%	1	1.0%	0	0.0%	9	0.0%
300s	21	18.3%	35	25.7%	0	10.0%	0	3.9%	52	5.0%
400s	45	39.1%	59	43.4%	47	47.0%	38	21.2%	56	28.9%
500s	28	24.3%	16	11.8%	21	21.0%	32	17.9%	8	31.1%
600s	3	2.6%	6	4.4%	2	2.0%	9	5.0%	180	4.4%
700s	0	0.0%	NA	NA	1	1.0%	0	0.0%	0	0.0%
Unknown/Missing	17	14.8%	18	13.2%	18	18.0%	93	52.0%	55	30.6%
25th Percentile	400		380		420		450		450	
75th Percentile	500		470		500		550		540	
HNU AVERAGE	455		433		464		498		496	
California Average	510		506		530		524		536	
National Average	513		511		508		527		531	
SAT COMPOSITE SCORE										
25th Percentile	810		780		830		910		910	
50th Percentile	890		845		900		985		990	
75th Percentile	1000		930		970		1100		1070	
# and % of Freshmen Taking SAT	98	85.2%	118	86.8%	82	82.0%	144	80.4%	125	69.4%
HNU AVERAGE	900		866		911		1006		996	
California Average	1006		1001		1010		1055			
National Average	1010		1006		1002		1060		1067	
ACT SCORE										
ACT Composite Average	19		18		19		20		20	
25th Percentile	16		15		16		17		17	
75th Percentile	22		21		20		23		22	
# and % of Freshmen Taking ACT	49	42.6%	52	38.2%	39	39.0%	54	30.2%	37	20.6%
HIGH SCHOOL GPA										
Standard Deviation	0.47		0.43		0.41		0.47		0.42	
Maximum	4.20		4.16		4.25		4.34		4.11	
Minimum	2.17		2.35		2.21		2.11		2.07	
1.00-1.99	0	0.0%	0	0.0%	0	0.0%	0	0.0%	0	0.0%
2.00-2.49	7	6.1%	2	1.5%	3	3.0%	4	2.2%	6	3.3%
2.50-2.99	26	22.6%	46	33.8%	31	31.0%	28	15.6%	35	19.4%
3.00-3.24	23	20.0%	25	18.4%	18	18.0%	22	12.3%	45	25.0%
3.25-3.49	24	20.9%	28	20.6%	20	20.0%	19	10.6%	34	18.9%
3.50-3.74	17	14.8%	14	10.3%	17	17.0%	16	8.9%	31	17.2%
3.75 or better	16	13.9%	20	14.7%	11	11.0%	16	8.9%	28	15.6%
Unknown/Missing	2	1.7%	1	0.7%	0	0.0%	74	41.3%	1	0.6%
25th Percentile	2.88		2.85		2.90		2.95		3.04	
75th Percentile	3.54		3.50		3.52		3.53		3.58	
# and % Reported High School GPA	113	98.3%	135	99.3%	100	100.0%	177	98.9%	179	99.4%
HNU AVERAGE	3.22		3.20		3.21		3.24		3.28	
FRESHMAN RANK IN HIGH SCHOOL CLASS										
In Top 10% of Class	2	4.2%	13	16.0%	5	10.2%	9	17.0%	8	9.8%
In Top 25% of Class	14	29.2%	34	42.0%	19	38.8%	20	37.7%	34	41.5%
In Top 50% of Class	36	75.0%	63	77.8%	35	71.4%	37	69.8%	62	75.6%
In Bottom 50% of Class	12	25.0%	18	22.2%	14	28.6%	16	30.2%	20	24.4%
In Bottom 25% of Class	2	4.2%	3	3.7%	2	4.1%	7	13.2%	5	6.1%
% Freshmen reporting Rank in Class	48	41.7%	81	59.6%	49	49.0%	53	29.6%	82	45.6%

* New SAT scale since 2017

First Year (IPEDS) Cohort Profile

TOTAL FIRST YEAR STUDENTS		Fall 2016		Fall 2017		Fall 2018	
		95		171		175	
Average Age		18		18		18	
Gender	Male (%)	31	33%	67	39%	55	31%
	Female (%)	64	67%	104	61%	120	69%
High School Type	Public						
	Private						
Ethnicity	Asian	11	12%	13	0%	19	11%
	Ameri. Indian/Alaska Native	0	0%	0	0%	1	1%
	Black/African American	9	9%	19	0%	27	15%
	Hispanic of Any Race	57	60%	84	0%	88	50%
	Hawaiian/Pacific Islander	0	0%	2	0%	5	3%
	<i>ALANA* Total</i>	<i>77</i>	<i>81%</i>	<i>118</i>	<i>69%</i>	<i>140</i>	<i>80%</i>
	White	6	6%	31	0%	15	9%
	Two or more races	4	4%	9	0%	7	4%
	International	6	6%	4	0%	2	1%
	Unknown	2	2%	9	0%	11	6%
Geography	<i>Alameda County</i>	33	35%	30	0%	52	30%
	<i>Bay Area including Alameda</i>	58	61%	64	0%	82	47%
	<i>Northern CA Incl. Bay Area</i>	76	80%	99	0%	105	60%
	<i>Southern CA Counties</i>	12	13%	35	0%	28	16%
	California Total	88	93%	149	0%	166	95%
	Out of State	1	1%	18	0%	6	3%
	International	6	6%	4	0%	2	1%
	Unknown	0	0%	0	0%	1	1%
Financial Aid (Including all grants, loans, & work study)	% Received	100%		98%		99%	
	Average Amount (per year, Spring freshmen are not included)	\$41,193		\$43,276		\$43,816	
	Pell Grant Received (Avg., % Received)	\$4,894	47%	\$4,760	46%	\$5,293	46%
Average Family Income (Avg. Amount, % Reported)		\$63,230	92%	\$67,260	95%	\$67,605	95%
Income Level	Unknown/Missing	8	8%	8	5%	8	5%
	Under \$30,000	23	24%	49	29%	54	31%
	\$30,000 - \$48,000	19	20%	29	17%	26	15%
	\$48,000 - \$75,000	20	21%	22	13%	32	18%
	\$75,000 - \$110,000	14	15%	32	19%	22	13%
	Above \$110,000	11	12%	31	18%	33	19%
First Generation		45%		34%		35%	
Living on Campus		67%		90%		69%	
Most Popular Majors (Including Double Major)		Pre-Biology		Pre-Biology		Business	
		Business		Business		Psychology	
		Psychology		Psychology		Criminology	
		Criminology		Criminology		Pre-Biology	

*ALANA: Hispanics of any race, Native American, Asian, African American, and Native Hawaiian.

New Transfer Student Profile

TOTAL NEW TRANSFER STUDENTS		Fall 2016		Fall 2017		Fall 2018	
		45		61		52	
Average Age		22		23		23	
Gender	Male (%)	24	53.3%	32	52.5%	25	48.1%
	Female (%)	21	46.7%	29	47.5%	27	51.9%
Academic Background	Average Transferring College GPA	2.85		3.07		NA	
	Average Transferring Units	59		54		48	
School Type	2-year Institution	29	64%	31	51%	1	2%
	4-year Institution	15	33%	17	28%	2	4%
	Unknown	1	2%	13	21%	0	0%
Ethnicity	Asian	3	7%	4	7%	3	6%
	Ameri. Indian/Alaska Native	0	0%	0	0%	0	0%
	Black/African American	9	20%	16	26%	16	31%
	Hispanic of Any Race	13	29%	17	28%	12	23%
	Hawaiian/Pacific Islander	1	2%	1	2%	1	2%
	<i>ALANA* Total</i>	<i>26</i>	<i>58%</i>	<i>38</i>	<i>62%</i>	<i>32</i>	<i>62%</i>
	White	17	38%	21	34%	14	27%
	Two or more races	0	0%	0	0%	3	6%
	Unknown	0	0%	1	2%	0	0%
Geography	<i>Alameda County</i>	<i>10</i>	<i>22%</i>	<i>17</i>	<i>28%</i>	<i>8</i>	<i>15%</i>
	<i>Bay Area including Alameda</i>	<i>27</i>	<i>60%</i>	<i>31</i>	<i>51%</i>	<i>23</i>	<i>44%</i>
	<i>Northern CA Incling Bay Area</i>	<i>33</i>	<i>73%</i>	<i>51</i>	<i>84%</i>	<i>30</i>	<i>58%</i>
	<i>Southern CA Counties</i>	<i>9</i>	<i>20%</i>	<i>9</i>	<i>15%</i>	<i>8</i>	<i>15%</i>
	California Total	42	93%	60	98%	47	90%
	Out of State	2	4%	0	0%	2	4%
	International	1	2%	1	2%	3	6%
	Unknown	0	0%	0	0%	0	0%
Financial Aid (Including all grants, loans, & work study)	% Received	98%		100%		90%	
	Average Amount (per year, Spring freshmen are not included)	\$35,258		\$38,939		\$42,824	
	Pell Grant Received (Avg., % Received)	\$4,665	27%	\$4,885	39%	\$5,182	37%
Average Family Income (Avg. Amount, % Reported)		\$88,506	78%	\$68,394	92%	\$75,455	85%
Income Level	Unknown/Missing	0	0%	5	8%	8	15%
	Under \$30,000	9	20%	21	34%	18	35%
	\$30,000 - \$48,000	4	9%	6	10%	1	2%
	\$48,000 - \$75,000	4	9%	7	11%	9	17%
	\$75,000 - \$110,000	4	9%	11	18%	6	12%
	Above \$110,000	14	31%	11	18%	10	19%
First Generation		22%		33%		42%	
Living on Campus		40%		56%		58%	
Most Popular Majors (Including Double Major)		Business		Business		Business	
		Communication Studies		Pre-Biology		Sociology	
		Pre-Biology		Criminology		Criminology	
		Psychology		Liberal Studies		Psychology	

*ALANA: Hispanics of any race, Native American, Asian, African American, and Native Hawaiian.

New Adult Student Profile

TOTAL NEW ADULT STUDENTS		Fall 2016		Fall 2017		Fall 2018	
		9		5		3	
Average Age		36		34		32	
Gender	Male (%)	2	22%	0	0%	1	33%
	Female (%)	7	78%	5	100%	2	67%
Academic Background	Average Transferring College GPA	2.61		3.07		NA	
	Average Transferring Units	50		63		71	
School Type	2-year Institution	6	67%	3	60%	1	33%
	4-year Institution	3	33%	2	40%	2	67%
	Unknown	0	0%	0	0%	0	0%
Ethnicity	Asian	1	0%	1	20%	0	0%
	Ameri. Indian/Alaska Native	0	0%	0	0%	0	0%
	Black/African American	7	0%	3	60%	1	33%
	Hispanic of Any Race	0	0%	1	20%	0	0%
	Hawaiian/Pacific Islander	0	0%	0	0%	0	0%
	ALANA* Total	8	89%	5	100%	1	33%
	White	0	0%	0	0%	1	33%
	Two or more races	0	0%	0	0%	1	33%
	Unknown	0	0%	0	0%	0	0%
Geography	<i>Alameda County</i>	7	0%	4	80%	2	67%
	<i>Bay Area including Alameda</i>	9	0%	5	100%	3	100%
	<i>Northern CA Incl Bay Area</i>	9	0%	5	100%	3	100%
	<i>Southern CA Counties</i>	0	0%	0	0%	0	0%
	California Total	9	0%	5	100%	3	100%
	Out of State	0	0%	0	0%	0	0%
	International	0	0%	0	0%	0	0%
	Unknown	0	0%	0	0%	0	0%
Financial Aid (Including all grants, loans, & work study)	% Received	78%		100%		67%	
	Average Amount (per year, Spring freshmen are not included)	\$12,798		\$15,180		\$16,940	
	Pell Grant Received (% Received, Avg.)	\$2,167	33%	\$5,920	20%	\$4,440	67%
Average Family Income (Avg. Amount, % Reported)		\$40,519	78%	\$36,882	80%	\$21,120	67%
Income Level	Unknown/Missing	2	22%	1	20%	1	33%
	Under 30K	2	22%	2	40%	1	33%
	30K-48K	3	33%	1	20%	1	33%
	48K-75K	1	11%	1	20%	0	0%
	75K-110k	1	11%	0	0%	0	0%
	Above 110K	0	0%	0	0%	0	0%
First Generation		44%		20%		33%	
Living on Campus		8%		0%		33%	
Most Popular Majors (Including Double Major)		Liberal Studies		Liberal Studies		Business	
		Business		Business		Sociology	
		Psychology		RN/BSN		Criminology	
						Psychology	

*ALANA: Hispanics of any race, Native American, Asian, African American, and Native Hawaiian.

Student Gender Profile

Degree-seeking Only

PROGRAM		Fall 2014		Fall 2015		Fall 2016		Fall 2017		Fall 2018	
		Male	Female	Male	Female	Male	Female	Male	Female	Male	Female
UNDERGRADUATE	Full-time	234	323	203	313	172	273	207	336	208	383
	Part-time	24	109	22	86	12	58	8	38	9	26
	TOTAL	258	432	225	399	184	331	215	374	217	409
	PERCENTAGE	37%	63%	36%	64%	36%	64%	37%	63%	35%	65%
GRADUATE	Full-time	18	85	19	88	19	85	23	78	33	97
	Part-time	76	255	70	216	50	186	40	152	37	161
	TOTAL	94	340	89	304	69	271	63	230	70	258
	PERCENTAGE	22%	78%	23%	77%	20%	80%	22%	78%	21%	79%
HNU TOTAL	Full-time	252	408	222	401	191	358	230	414	241	480
	Part-time	100	364	92	302	62	244	48	190	46	187
	TOTAL	352	772	314	703	253	602	278	604	287	667
	PERCENTAGE	31%	69%	31%	69%	30%	70%	32%	68%	30%	70%

Student Ethnicity Profile

ETHNICITY/RACE	Asian		Amer.Indian/ Alaska Native		Black/African American		Hispanic of Any Race		Hawaiian or Pac. Islander		White		Two or more races		International		Unknown		ALANA*		Total
	#	%	#	%	#	%	#	%	#	%	#	%	#	%	#	%	#	%	#	%	
FAIL 2018																					
UG TOTAL	62	9.9%	1	0.2%	114	18.1%	268	42.6%	13	2.1%	98	15.6%	29	4.6%	18	2.9%	26	4.1%	458	72.8%	629
First Year (IPEDS) Cohort ¹	0	NA	0	NA	0	NA	0	NA	0	NA	0	NA	0	NA	0	NA	0	NA	0	NA	0
DEGREE-SEEKING ²	62	9.9%	1	0.2%	113	18.1%	267	42.7%	13	2.1%	98	15.7%	29	4.6%	18	2.9%	25	4.0%	456	72.8%	626
TRAD UG	60	10.0%	1	0.2%	100	16.6%	263	43.8%	13	2.2%	95	15.8%	28	4.7%	18	3.0%	23	3.8%	437	72.7%	601
ABDP	2	7.7%	0	0.0%	13	50.0%	5	19.2%	0	0.0%	3	11.5%	1	3.8%	0	0.0%	2	7.7%	20	76.9%	26
NEXUS	0	NA	0	NA	0	NA	0	NA	0	NA	0	NA	0	NA	0	NA	0	NA	0	NA	0
LVN/BSN	0	NA	0	NA	0	NA	0	NA	0	NA	0	NA	0	NA	0	NA	0	NA	0	NA	0
OTHER	0	0.0%	0	0.0%	1	50.0%	0	0.0%	0	0.0%	0	0.0%	0	0.0%	0	0.0%	1	50.0%	1	50.0%	2
GRAD TOTAL	46	14.0%	2	0.6%	86	26.2%	70	21.3%	0	0.0%	92	28.0%	3	0.9%	13	4.0%	16	4.9%	204	62.2%	328
MASTER'S	43	14.7%	1	0.3%	74	25.3%	62	21.2%	0	0.0%	81	27.7%	3	1.0%	13	4.5%	15	5.1%	180	61.6%	292
CREDENTIAL	0	0.0%	1	3.8%	11	42.3%	5	19.2%	0	0.0%	8	30.8%	0	0.0%	0	0.0%	1	3.8%	17	65.4%	26
CERTIFICATE	3	30.0%	0	0.0%	1	10.0%	3	30.0%	0	0.0%	3	30.0%	0	0.0%	0	0.0%	0	0.0%	7	70.0%	10
UNKNOWN/OTHER GR	0	NA	0	NA	0	NA	0	NA	0	NA	0	NA	0	NA	0	NA	0	NA	0	NA	0
UNIVERSITY TOTAL	108	11.3%	3	0.3%	200	20.9%	338	35.3%	13	1.4%	190	19.9%	32	3.3%	31	3.2%	42	4.4%	662	69.2%	957
FAIL 2017																					
UG TOTAL	51	8.6%	1	0.2%	109	18.4%	256	43.3%	11	1.9%	107	18.1%	17	2.9%	20	3.4%	19	3.2%	428	72.4%	591
First Year (IPEDS) Cohort ¹	13	7.4%	0	0.0%	20	11.4%	86	48.9%	2	1.1%	32	18.2%	10	5.7%	4	2.3%	9	5.1%	121	68.8%	176
DEGREE-SEEKING ²	51	8.7%	1	0.2%	109	18.5%	256	43.5%	11	1.9%	107	18.2%	17	2.9%	20	3.4%	17	2.9%	428	72.7%	589
TRAD UG	45	8.3%	0	0.0%	81	15.0%	249	46.1%	11	2.0%	104	19.3%	16	3.0%	20	3.7%	14	2.6%	386	71.5%	540
ABDP	6	13.6%	1	2.3%	26	59.1%	6	13.6%	0	0.0%	2	4.5%	1	2.3%	0	0.0%	2	4.5%	39	88.6%	44
NEXUS	0	0.0%	0	0.0%	2	40.0%	1	20.0%	0	0.0%	1	20.0%	0	0.0%	0	0.0%	1	20.0%	3	60.0%	5
LVN/BSN	0	NA	0	NA	0	NA	0	NA	0	NA	0	NA	0	NA	0	NA	0	NA	0	NA	0
OTHER	0	0.0%	0	0.0%	0	0.0%	0	0.0%	0	0.0%	0	0.0%	0	0.0%	0	0.0%	2	100.0%	0	0.0%	2
GRAD TOTAL	35	11.9%	3	1.0%	79	27.0%	67	22.9%	4	1.4%	93	31.7%	0	0.0%	12	4.1%	0	0.0%	188	64.2%	293
MASTER'S	33	12.4%	2	0.8%	74	27.8%	60	22.6%	4	1.5%	82	30.8%	0	0.0%	11	4.1%	0	0.0%	173	65.0%	266
CREDENTIAL	1	5.3%	1	5.3%	4	21.1%	5	26.3%	0	0.0%	7	36.8%	0	0.0%	1	5.3%	0	0.0%	11	57.9%	19
CERTIFICATE	1	12.5%	0	0.0%	1	12.5%	2	25.0%	0	0.0%	4	50.0%	0	0.0%	0	0.0%	0	0.0%	4	50.0%	8
UNKNOWN/OTHER GR	0	NA	0	NA	0	NA	0	NA	0	NA	0	NA	0	NA	0	NA	0	NA	0	NA	0
UNIVERSITY TOTAL	86	9.7%	4	0.5%	188	21.3%	323	36.5%	15	1.7%	200	22.6%	17	1.9%	32	3.6%	19	2.1%	616	69.7%	884
FAIL 2016																					
UG TOTAL	53	10.1%	2	0.4%	108	20.5%	220	41.8%	13	2.5%	88	16.7%	9	1.7%	20	3.8%	13	2.5%	396	75.3%	526
First Year (IPEDS) Cohort ¹	11	11.6%	0	0.0%	9	9.5%	57	60.0%	0	0.0%	6	6.3%	4	4.2%	6	6.3%	2	2.1%	77	81.1%	95
DEGREE-SEEKING ²	51	9.9%	2	0.4%	106	20.6%	214	41.6%	13	2.5%	88	17.1%	9	1.7%	20	3.9%	12	2.3%	386	75.0%	515
TRAD UG	41	9.0%	1	0.2%	71	15.6%	211	46.3%	11	2.4%	86	18.9%	8	1.8%	20	4.4%	7	1.5%	335	73.5%	456
ABDP	6	9.7%	1	1.6%	36	58.1%	9	14.5%	2	3.2%	2	3.2%	1	1.6%	0	0.0%	5	8.1%	54	87.1%	62
NEXUS	1	100.0%	0	0.0%	0	0.0%	0	0.0%	0	0.0%	0	0.0%	0	0.0%	0	0.0%	0	0.0%	1	100.0%	1
LVN/BSN	5	83.3%	0	0.0%	1	16.7%	0	0.0%	0	0.0%	0	0.0%	0	0.0%	0	0.0%	0	0.0%	6	100.0%	6
OTHER	0	0.0%	0	0.0%	0	0.0%	0	0.0%	0	0.0%	0	0.0%	0	0.0%	0	0.0%	1	100.0%	0	0.0%	1
GRAD TOTAL	56	16.5%	2	0.6%	108	31.8%	52	15.3%	6	1.8%	99	29.1%	4	1.2%	7	2.1%	6	1.8%	224	65.9%	340
MASTER'S	49	16.6%	1	0.3%	97	32.9%	45	15.3%	6	2.0%	85	28.8%	4	1.4%	5	1.7%	3	1.0%	198	67.1%	295
CREDENTIAL	4	11.8%	1	2.9%	7	20.6%	7	20.6%	0	0.0%	11	32.4%	0	0.0%	2	5.9%	2	5.9%	19	55.9%	34
CERTIFICATE	3	27.3%	0	0.0%	4	36.4%	0	0.0%	0	0.0%	3	27.3%	0	0.0%	0	0.0%	1	9.1%	7	63.6%	11
UNKNOWN/OTHER GR	0	NA	0	NA	0	NA	0	NA	0	NA	0	NA	0	NA	0	NA	0	NA	0	NA	0
UNIVERSITY TOTAL	109	12.6%	4	0.5%	216	24.9%	272	31.4%	19	2.2%	187	21.6%	13	1.5%	27	3.1%	19	2.2%	620	71.6%	866

(1) and (2) Count for First Year Cohort and Degree-seeking are included within the count for Traditional Undergraduate (Trad UG). Therefore, this group is not added up in any total tallies.

*ALANA: Hispanics of any race, Native American, Asian, African American, and Native Hawaiian.

Class Size Comparison

FALL 2018		Total Classes	Class Size									Total Enrollment	Average Class Size	
			1-5	6-10	11-15	16-20	21-25	26-30	31-35	36-40	>40			
Lecture	GE*	13	1	3	1	4	4	0	0			205	15.8	
			8%	23%	8%	31%	31%	0%	0%					
	Course Program	UG	165	13	33	22	41	36	15	4			2,768	16.8
				8%	20%	13%	25%	22%	9%	2%				
		GR	60	14	20	10	7	7	1	1			686	11.4
			23%	33%	17%	12%	12%	2%	2%					
	Total	225	27	53	32	48	43	16	5			3,454	15.4	
			12%	24%	14%	21%	19%	7%	2%					
All (Lecture & Non-Lecture)	UG	170	13	35	22	43	37	15	4			2,842	16.7	
			8%	21%	13%	25%	22%	9%	2%					
	GR	61	14	20	11	7	7	1	1			701	11.5	
			23%	33%	18%	11%	11%	2%	2%					
	Total	231	27	55	33	50	44	16	5			3,543	15.3	
			12%	24%	14%	22%	19%	7%	2%					
FALL 2017		Total Classes	Class Size									Total Enrollment	Average Class Size	
			1-5	6-10	11-15	16-20	21-25	26-30	31-35	36-40	>40			
Lecture	GE*	12	0	4	3	1	4	0	0			187	15.6	
			0%	33%	25%	8%	33%	0%	0%					
	Course Program	UG	157	19	28	30	29	35	13	3			2,492	15.9
				12%	18%	19%	19%	22%	8%	2%				
		GR	66	18	25	14	6	2	0	1			627	9.5
			27%	38%	21%	9%	3%	0%	2%					
	Total	223	37	53	44	35	37	13	4			3,119	14.0	
			17%	24%	20%	16%	17%	6%	2%					
All (Lecture & Non-Lecture)	UG	159	19	29	30	30	35	13	3			2,518	15.8	
			12%	18%	19%	19%	22%	8%	2%					
	GR	67	18	25	14	7	2	0	1			643	9.6	
			27%	37%	21%	10%	3%	0%	2%					
	Total	226	37	54	44	37	37	13	4			3,161	14.0	
			16%	24%	20%	16%	16%	6%	2%					

(*) Count for GE are included within the count for UG; therefore, this group is not added up in any total tallies.

Degree Report

UNDERGRADUATE	15/16	16/17	17/18
Trad UNDR and ABD			
Total Bachelor Degrees	196	144	113
Bachelor of Arts	132	127	102
Bachelor of Science	64	17	11
Bachelor of Music	0	0	0
Major Fields (incl. double majors)			
Accounting	5	5	2
Art	0	2	
Biological Science	8	4	2
Business	37	34	32
Child Development	0	0	
Communication Studies	4	9	11
Computer Systems	0	0	
Criminology	10	13	5
English	3	1	3
History	1	1	1
Human Services	0	1	
Humanities	1	0	
Intercultural Peace and Justice	0	1	
International Relations	0	4	2
Kinesiology			9
Latin American & Latino/a Studies	2	2	
Liberal Studies	14	13	10
Multimedia Arts and Communication Studies	3	2	3
Music	1	0	1
LVN/BSN	43	6	1
RN/BSN	2	3	
Philosophy	0	3	
Political Science	0	0	
Psychobiology	1	0	
Psychology	32	21	18
Religious Studies	2	1	2
Sociology	4	1	3
Sports Biology	20	15	5
Special/Defunct Majors	2	2	3

UNDERGRADUATE SUMMARY			
Number of Bachelor Degrees	196	144	113
Number of Bach. Degree Completers	190	140	109

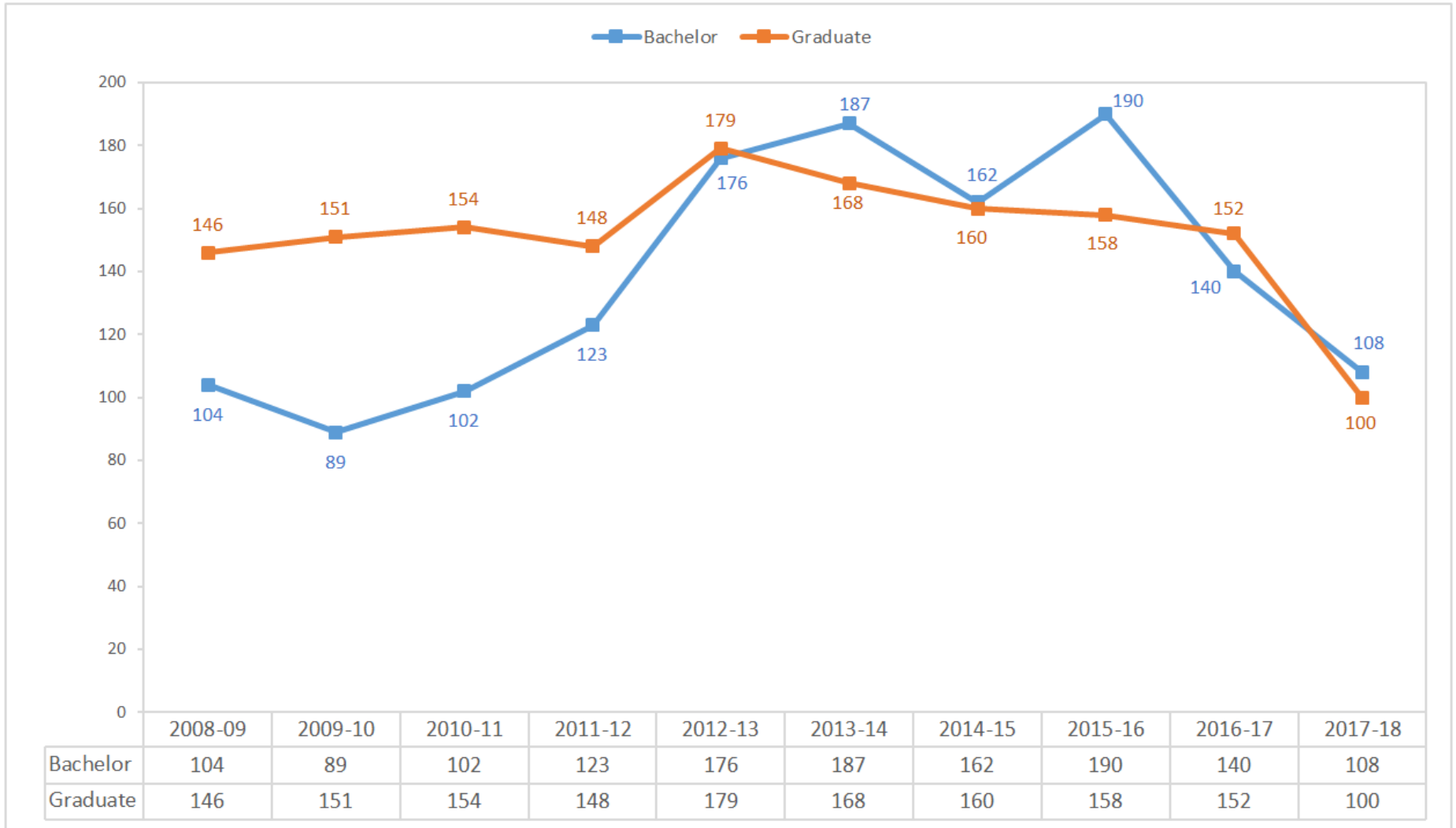
GRADUATE	15/16	16/17	17/18
MASTER			
Total Master Degrees	124	113	86
Master of Arts	43	29	31
M.S.N	55	39	27
M.B.A	9	15	17
Master of Music	3	6	2
M.Ed.	14	24	9
Major/Field of Study			
Business Administration	9	15	17
Counseling Psychology	29	15	13
Educational Therapy	1	4	7
Culture and Spirituality	6	0	0
Education	14	24	9
English: The Writer's Craft	0	5	0
Forensic Psychology	7	5	11
Music	3	6	2
Nursing	55	39	27
Pastoral Ministries	0	0	0
CREDENTIAL			
Total Credentials	18	14	11
Level 1 Education Specialist: Mild/Moderate Disabilities	9	0	2
Level 2 Education Specialist: Mild/Moderate Disabilities	0	0	0
Multiple Subject	4	7	5
Single Subject	5	7	4
POST-BACHELOR'S CERTIFICATE			
Total Certificate	21	12	10
Culture and Spirituality*	3	0	0
Educational Therapy	11	8	9
Forensic Psychology	0	0	0
Kodaly Specialist	0	0	0
Kodaly Summer	0	3	0
Pastoral Counseling	2	0	0
Traumatology and Treatment	5	1	1
Vocal Pedagogy		0	0
POST-MASTER'S CERTIFICATE			
Total Certificate	2	3	2
Administration/Management	0	0	0
Clinical Faculty/Nurse Educator	0	0	0
Family Nurse Practitioner	2	3	2

GRADUATE SUMMARY			
Number of Master Degrees	124	113	86
Number of Certificates	21	12	10
Number of Credentials	18	14	11
Number of Post-master Certificates	2	3	2
TOTAL GRADUATE DEGREES	165	142	109
TOTAL GRADUATE COMPLETERS	152	137	99

GRAND TOTAL			
Total Number of Degrees Granted	361	286	222
Total Number of Completers	342	277	208
Completers' Change fr Last Year	15.5%	-19.0%	-24.9%

(*) The figures include all certificate and sabbatical degrees granted.

HNU Graduation by Degrees



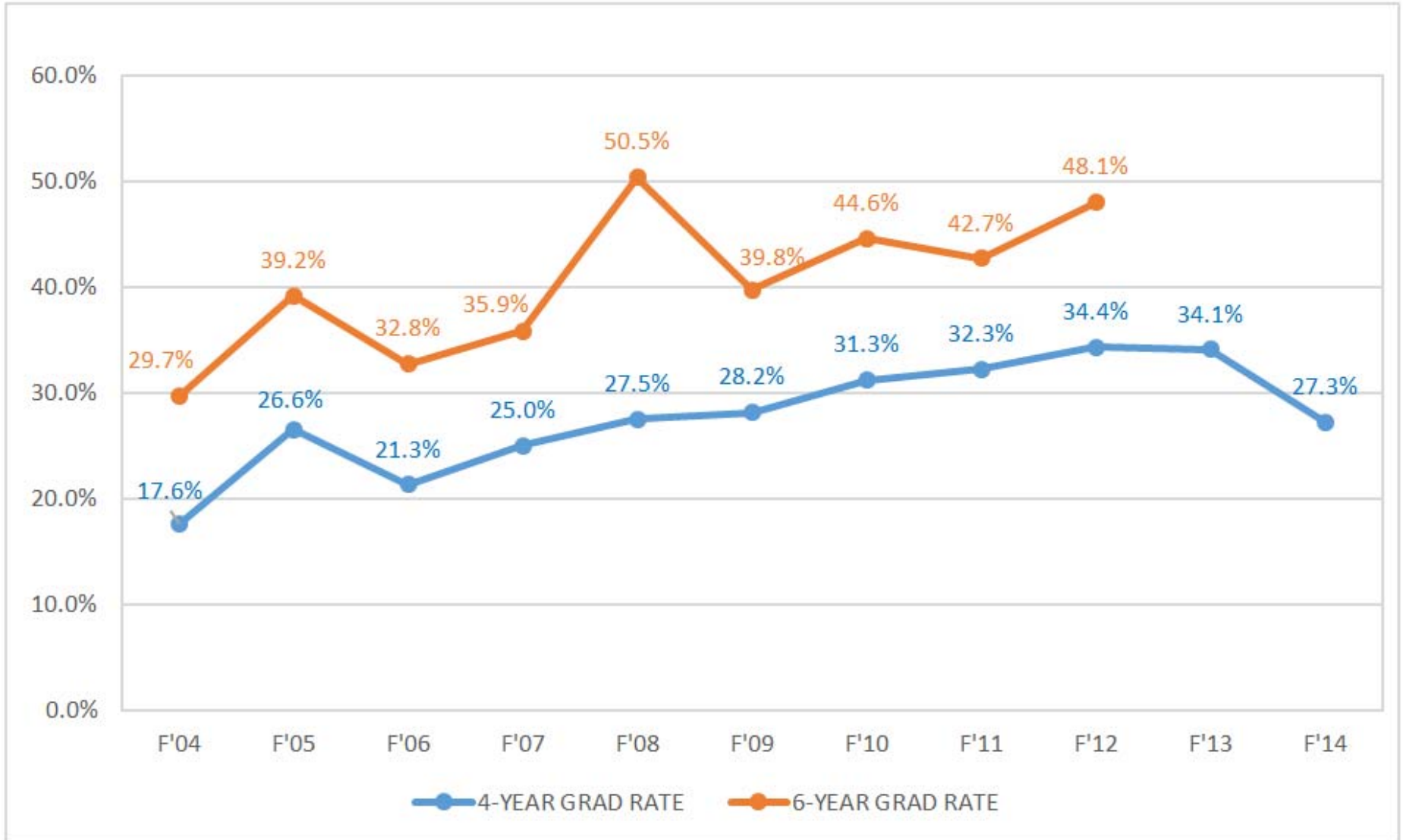
(*) Graduate degrees include all Master's degree, certificate, and credentials granted.

Retention and Graduation Summary

Fall-to-Fall Retention & 4-year and 6-year Graduation Rates by Ethnicity

LEVEL	Ethnicity	F'09	F'10	F'11	F'12	F'13	F'14	F'15	F'16	F'17	F'18
Entering Cohort (#)	Asian	9	6	4	8	13	5	9	11	13	19
	Ameri. Indian/Alaska Native	0	2	0	1	0	0	0	0	0	1
	Black/African American	13	20	19	14	13	13	19	9	19	27
	Hispanic of Any Race	40	35	42	55	35	43	66	57	84	88
	Hawaiian/Pacific Islander	3	4	6	9	3	4	3	0	2	5
	White	18	15	23	33	16	20	18	6	31	15
	Two or more races	5	10	23	2	0	1	1	4	9	7
	International	9	3	7	6	3	2	3	6	4	2
	Unknown	6	17	0	3	2	0	0	2	9	11
	TOTAL	103	112	124	131	85	88	119	95	171	175
Second Fall Retention (%)	Asian	44	100	75	63	54	60	67	91	92	
	Ameri. Indian/Alaska Native	NA	50	NA	100	NA	NA	NA	NA	NA	
	Black/African American	54	75	63	71	100	54	79	89	58	
	Hispanic of Any Race	65	77	79	69	66	60	73	81	61	
	Hawaiian/Pacific Islander	100	100	83	78	67	100	67	NA	100	
	White	83	67	65	70	75	50	83	33	58	
	Two or more races	40	50	74	0	NA	100	100	100	67	
	International	89	33	71	83	67	50	67	100	25	
	Unknown	33	53	NA	67	50	NA	NA	100	67	
	TOTAL	65	70	73	69	71	59	75	82	63	
4-year Graduation (%)	Asian	33	100	50	38	15	60				
	Ameri. Indian/Alaska Native	NA	0	NA	0	NA	NA				
	Black/African American	31	20	26	29	54	23				
	Hispanic of Any Race	25	43	43	33	26	30				
	Hawaiian/Pacific Islander	67	50	33	22	33	25				
	White	17	20	17	45	56	21				
	Two or more races	0	20	30	0	NA	0				
	International	78	0	29	33	33	0				
	Unknown	0	18	NA	33	0	NA				
	TOTAL	28	31	32	34	34	27				
6-year Graduation (%)	Asian	33	100	50	38						
	Ameri. Indian/Alaska Native	NA	0	NA	100						
	Black/African American	31	30	42	36						
	Hispanic of Any Race	35	57	52	53						
	Hawaiian/Pacific Islander	67	75	33	44						
	White	56	33	35	52						
	Two or more races	0	40	35	0						
	International	78	0	43	50						
	Unknown	17	35	NA	33						
	TOTAL	40	45	43	48						

4-year and 6-year Graduation Rate Trend



Retention Rates

New Students

NEW STUDENTS	First-Time Freshmen	All Trad UG
	RETENTION RATE	RETENTION RATE
10-YEAR AVERAGE FALL-TO-FALL	72.0%	73.3%
Fall 2017 -to- Fall 2018	63.3%	66.7%
Fall 2016 -to- Fall 2017	81.3%	81.4%
Fall 2015 -to- Fall 2016	75.4%	73.4%
Fall 2014 -to- Fall 2015	64.8%	66.9%
Fall 2013 -to- Fall 2014	74.8%	74.3%
Fall 2012 -to- Fall 2013	72.0%	74.0%
Fall 2011 -to- Fall 2012	72.0%	73.0%
Fall 2010 -to- Fall 2011	72.0%	74.0%
Fall 2009 -to- Fall 2010	69.9%	71.2%
Fall 2008 -to- Fall 2009	75.0%	78.0%
10-YEAR AVERAGE FALL-TO-SPRING	88.6%	89.1%
Fall 2018 -to- Spring 2019	84.1%	84.1%
Fall 2017 -to- Spring 2018	83.6%	83.8%
Fall 2016 -to- Spring 2017	92.7%	93.1%
Fall 2015 -to- Spring 2016	91.5%	92.4%
Fall 2014 -to- Spring 2015	93.3%	92.6%
Fall 2013 -to- Spring 2014	92.0%	92.0%
Fall 2012 -to- Spring 2013	90.0%	91.0%
Fall 2011 -to- Spring 2012	88.0%	89.0%
Fall 2010 -to- Spring 2011	86.0%	85.0%
Fall 2009 -to- Spring 2010	85.0%	88.3%

Retention Rates

Continuing Students

CONTINUING STUDENTS	Trad UG	Nursing Adult	Graduate
	RETENTION RATE	RETENTION RATE	RETENTION RATE
10-YEAR AVERAGE SPRING-TO-FALL	77.2%	71.2%	69.3%
Spring 2018 -to- Fall 2018	80.8%	N/A	70.7%
Spring 2017 -to- Fall 2017	84.3%	100.0%	67.7%
Spring 2016 -to- Fall 2016	71.1%	29.2%	69.1%
Spring 2015 -to- Fall 2015	72.8%	82.8%	74.8%
Spring 2014 -to- Fall 2014	77.9%	80.9%	63.4%
Spring 2013 -to- Fall 2013	77.0%	70.0%	66.0%
Spring 2012 -to- Fall 2012	75.0%	88.0%	67.0%
Spring 2011 -to- Fall 2011	77.0%	78.9%	72.4%
Spring 2010 -to- Fall 2010	80.0%	62.0%	72.0%
Spring 2009 -to- Fall 2009	76.0%	49.0%	70.0%
10-YEAR AVERAGE FALL-TO-SPRING	87.4%	89.3%	84.1%
Fall 2018 -to- Spring 2019	87.1%	N/A	79.0%
Fall 2017 -to- Spring 2018	94.8%	100.0%	87.8%
Fall 2016 -to- Spring 2017	92.0%	100.0%	83.3%
Fall 2015 -to- Spring 2016	86.8%	89.7%	84.9%
Fall 2014 -to- Spring 2015	86.2%	93.1%	85.0%
Fall 2013 -to- Spring 2014	88.9%	85.8%	82.5%
Fall 2012 -to- Spring 2013	85.0%	91.0%	85.0%
Fall 2011 -to- Spring 2012	82.0%	93.0%	83.0%
Fall 2010 -to- Spring 2011	83.0%	80.6%	85.4%
Fall 2009 -to- Spring 2010	88.3%	70.0%	85.0%

Annual Cost to Attend HNU

PROGRAM	Live On Campus ¹					Live Off Campus					Live With Parents				
	2014-2015	2015-2016	2016-2017	2017-2018	2018-2019	2014-2015	2015-2016	2016-2017	2017-2018	2018-2019	2014-2015	2015-2016	2016-2017	2017-2018	2018-2019
Semester UNDR															
Tuition (12-18 units/sem)	34,058	35,166	36,574	37,672	37,672	34,058	35,166	36,574	37,672	37,672	34,058	35,166	36,574	37,672	37,672
Fees	430	500	500	516	516	520	604	604	624	624	520	604	604	624	624
Living Expense Budget ²	16,317	16,811	17,183	17,686	17,749	17,388	17,901	18,441	19,386	19,944	10,611	10,818	11,043	11,475	11,700
Room and board	11,412	11,870	12,224	12,592	12,592	11,493	11,970	12,492	13,293	13,779	4,599	4,770	4,968	5,247	5,418
Books and supplies	1,746	1,764	1,791	1,854	1,917	1,746	1,764	1,791	1,854	1,917	1,746	1,764	1,791	1,854	1,917
Transportation	864	855	837	837	846	1,278	1,269	1,242	1,233	1,251	1,134	1,125	1,107	1,098	1,107
Personal expenses	2,295	2,322	2,331	2,403	2,394	2,871	2,898	2,916	3,006	2,997	3,132	3,159	3,177	3,276	3,258
TOTAL	50,805	52,477	54,257	55,874	55,937	51,966	53,671	55,619	57,682	58,240	45,189	46,588	48,221	49,771	49,996
Adult UNDR															
Tuition (36 units/year)	23,544	24,336	24,336	26,064	26,064	23,544	24,336	24,336	26,064	26,064	23,544	24,336	24,336	26,064	26,064
Fees	430	500	500	516	516	520	604	707	624	624	520	604	707	624	624
Living Expense Budget ²	16,317	16,811	17,183	17,686	17,749	17,388	17,901	18,441	19,386	19,944	10,611	10,818	11,043	11,475	11,700
TOTAL	40,721	42,147	42,519	44,993	45,056	41,972	43,445	44,191	46,801	47,359	35,195	36,362	36,793	38,890	39,115
RN to BSN/AND to BSN															
Tuition (36 units/year)	23,544	24,336	26,352	27,144	27,144	23,544	24,336	26,352	27,144	27,144	23,544	24,336	26,352	27,144	27,144
HNU Fees	430	500	500	619	619	520	604	604	727	727	520	604	604	727	727
Living Expense Budget ²	16,317	16,811	17,183	17,686	17,749	17,388	17,901	18,441	19,386	19,944	10,611	10,818	11,043	11,475	11,700
TOTAL	40,291	41,647	44,035	45,449	45,512	41,452	42,841	45,397	47,257	47,815	34,675	35,758	37,999	39,346	39,571
LVN to BSN															
Tuition (36 units/year)	23,904	25,344	26,352	27,144	27,144	23,904	25,344	26,352	27,144	27,144	23,904	25,344	26,352	27,144	27,144
HNU Fees	530	600	600	619	619	620	704	704	727	727	620	704	704	727	727
Living Expense Budget ²	16,317	16,811	17,183	17,686	17,749	17,388	17,901	18,441	19,386	19,944	10,611	10,818	11,043	11,475	11,700
TOTAL	41,281	43,355	44,735	46,176	46,239	42,532	44,653	46,201	47,984	48,542	35,755	37,570	38,803	40,073	40,298
ADN to BSN															
Tuition (36 units/year)	23,544	24,336	24,336	27,144	27,144	23,544	24,336	24,336	27,144	27,144	23,544	24,336	24,336	27,144	27,144
HNU Fees	430	500	500	619	619	430	500	500	727	727	520	604	604	727	727
Living Expense Budget ³	16,317	16,811	17,183	17,686	17,749	17,388	17,901	18,441	19,386	19,944	10,611	10,818	11,043	11,475	11,700
TOTAL	40,721	42,147	42,519	46,176	46,239	41,792	43,237	43,777	47,984	48,542	35,195	36,362	36,587	40,073	40,298
Graduate (MSN)															
Tuition (27 units/year)	25,056	26,568	27,621	28,458	28,458	25,056	26,568	27,621	28,458	28,458	25,056	26,568	27,621	28,458	28,458
HNU Fees	530	600	600	619	619	620	704	704	727	727	620	704	704	727	727
Living Expense Budget ²	16,317	16,811	17,183	17,686	17,749	17,388	17,901	18,441	19,386	19,944	10,611	10,818	11,043	11,475	11,700
TOTAL	42,433	44,579	46,004	47,490	47,553	43,684	45,877	47,470	49,298	49,856	36,907	38,794	40,072	41,387	41,612
Graduate (All Others)															
Tuition (27 units/year)	24,462	25,272	26,298	27,081	27,081	24,462	25,272	26,298	27,081	27,081	24,462	25,272	26,298	27,081	27,081
HNU Fees	430	500	500	516	516	520	604	604	727	727	520	604	604	727	727
Living Expense Budget ²	16,317	16,811	17,183	17,686	17,749	17,388	17,901	18,441	19,386	19,944	10,611	10,818	11,043	11,475	11,700
TOTAL	41,639	43,083	44,481	46,010	46,073	42,890	44,381	45,947	47,921	48,479	36,113	37,298	38,549	40,010	40,235

(1) The Room and Board figures for "Live On Campus" are based on HNU's rates for double bed occupancy and 14 meal plan.

(2) This figure was calculated based on the estimated amounts for Room and Board, Transportation, and Personal expenses that the California Student Aid Commission (CSAC) publishes in

Glossary

Part 1

Term	Definition/Description
ABD	Adult Bachelor Degree
ABDP	Adult Bachelor Degree Program
Academic Year	The period of time that begins late August and concludes the following July, equated to fall semester, spring semester, and summer session.
ACT	ACT, previously known as the American College Testing program, measures educational development and readiness to pursue college-level coursework in English, mathematics, natural science, and social studies. Student performance does not reflect innate ability and is influenced by a student's educational preparedness.
ALANA	This includes the ethnic groups of Asian, Native American/Alaska Native, Black/African American, Hispanic of Any Race, and Hawaiian/Pacific Islander.
Board Type/Meal Plan	10 meals: 10 meals per week
	14 meals: 14 meals per week
	19 meals: 19 meals per week
	GA Meal: A meal plan for other Graduate Assistants not working in housing: zero meal per week
	Meal Plan Waiver: Zero meal per week
	RA: A meal plan for Resident Assistants, same as "14 meals"
Census Date	For institutions operating under a traditional academic year calendar, enrollment is reported as of the institution's official reporting date. At HNU, this date is about mid-October and mid-February the fall and spring semesters, respectively.
Cohort	A specific group of students established for tracking purposes. Cohorts usually consist of separate full-time or part-time groups of undergraduate or graduate students who begin college during the same given semester.
Continuing/Returning Student	A student who was enrolled prior to the previous fall or spring semester and has returned to study in the current term, regardless of the number of credit hours they have earned.
Degree-Seeking Student	A student who was admitted as degree-seeking, who has declared the pursuit of a bachelor's or master's degree and is enrolled in courses for credit.
Earned Credit	The number of credit hours a student has completed towards their degree, including transferred credits.
ex.cel	An undergraduate program that stopped offering classes since 2006.
Faculty FTE	The full-time-equivalent instructional faculty per semester is calculated by summing the total number of units taught divided by 12.
First-Time, First-Year or First-time Freshmen	A student attending any postsecondary institution for the first time at the undergraduate level. Includes students enrolled in the fall term who attended a postsecondary institution for the first time at the same level in the prior summer term. Also includes students who entered with advanced standing (college credit earned before graduation from high school).

Glossary

Part 2

Term	Definition/Description
Full-Time Graduate Student	A graduate student must be enrolled in 9 or more credits to be considered full-time. A Credential student must be enrolled in 12 or more credits to be considered full-time.
Full-Time Undergraduate Student	An undergraduate student must be enrolled in 12 or more credits to be considered full-time.
Graduation Rate	The percentage of students in a given cohort graduating within a time period of 4, 5 or 6 years. Six years, or 150% of normal 4-year time-to-degree, is the typical measurement for a first-time, full-time degree-seeking cohort's graduation rate. The number of students in the initial/entry cohort is the denominator of the rate; the number of students graduating is the numerator of the rate.
IPEDS	"IPEDS" stands for Integrated Postsecondary Education Data System. The core postsecondary education data collection program for NCES—a system of surveys designed to collect data from all primary providers of postsecondary education. IPEDS is a single, comprehensive system designed to encompass all institutions and educational organizations whose primary purpose is to provide postsecondary education. The IPEDS system is built around a series of interrelated surveys to collect institution-level data in such areas as enrollments, program completions, faculty, staff, and finances.
First Year (IPEDS) Cohort	The incoming first-time full-time degree seeking undergraduate group/cohort entering in fall; this is the initial/entry cohort in graduation rate calculations.
Lecture	An organized course offered for credit, identified by discipline and number, meeting at a stated time or times in a classroom or similar setting, and not a subsection such as a laboratory or discussion session. (All Lecture and Non-Lecture classes in Class Size Comparison excludes distance learning classes and noncredit classes and individual instruction such as dissertation or thesis research, music instruction, or one-to-one readings; excludes students in independent study, cooperative programs, internships, foreign language taped tutor sessions, practicums, and all students in one-on-one classes.)
Level	A student is either an undergraduate (UG or UNDR) or graduate (GR or GRAD) student. For historical data, if there is not enough information to identify a student as an undergraduate, he/she is considered as a graduate student.
NEXUS	For this current academic year, NEXUS refers to the RN to BSN program.
Other/Unknown, Other/Special Status, or Undeclared/Special Status	This is an extra category used for classifying students whose information is conflicting, missing, or not declared that can not be considered in any listed categories.
Occupancy Rate	Occupancy rate is the ratio of rental units rented versus the capacity -- the number of available units.
Part-Time Graduate Student	A graduate student enrolled for fewer than 9 credits per semester or a Credential student enrolled for fewer than 12 are considered part-time.
Part-Time Undergraduate Student	A student enrolled for fewer than 12 credits per semester.
Race/Ethnicity	Asian: A person having origins in any of the original peoples of the Far East, Southeast Asia, or the Indian Subcontinent, including, for example, Cambodia, China, India, Japan, Korea, Malaysia, Pakistan, the Philippine Islands, Thailand, and Vietnam.
	American Indian or Alaska Native: A person having origins in any of the original peoples of North and South America (including Central America) who maintains cultural identification through tribal affiliation or community attachment.

Glossary

Part 3

Term	Definition/Description
Race/Ethnicity (Cont.)	Black or African American: A person having origins in any of the black racial groups of Africa.
	Hispanic or Latino: A person of Cuban, Mexican, Puerto Rican, South or Central American, or other Spanish culture or origin, regardless of race.
	Native Hawaiian or Other Pacific Islander: A person having origins in any of the original peoples of Hawaii, Guam, Samoa, or other Pacific Islands.
	Nonresident alien (aka. International) : A person who is not a citizen or national of the United States and who is in this country on a visa or temporary basis and does not have the right to remain indefinitely. Note: Nonresident aliens are to be reported separately in the places provided, rather than in any of the racial/ethnic categories described above. In some reports, "International" was used in place of "Nonresident Alien."
	Race/ethnicity unknown: The category used to report students or employees whose race and ethnicity are not known.
Retention Rate	White: A person having origins in any of the original peoples of Europe, the Middle East, or North Africa.
	The proportion of the number of returned students over the number of initial/entry cohort for a certain period of time expressed in percentage. The entry cohort of continuing students doesn't include students completing their programs during the period because they don't need to return.
Room Type	Apartment: A single room for Resident Life Graduate Assistant or Hall Director (bigger than a normal single room), a new room type since Fall 2013.
	Double: a double room for two students
	Double as Single: a double room for one student
	Extended Suite: 2 double rooms with a small conjunction room for four students, aka. "Suite"
	Housing Staff: Resident Assistants, Resident Life Graduate Assistants, and Housing Director
	Mini Single: a very small single room for one student
	Single: a single room for one student, aka. "Small Single"
SAT	Single with Bath: a single room including a bathroom for one student
	Previously known as the Scholastic Aptitude Test, this is an examination administered by the Educational Testing Service (ETS) and used to predict the facility with which an individual will progress in learning college-level academic subjects. A student's SAT score is made up of their verbal (SAT-V), math (SAT-M) and writing (SAT-W) scores.
Special Post BA	"Special Post BA" stands for special post-bachelor students. This is a group of non-degree-seeking students that are taking classes above undergraduate level; they are considered as graduate students in enrollment reports.
Student Class/Rank	Class is derived from a student's earned credit hours (including HNU and transfer credits), and are as follows:
	Freshmen (FR): 0 to 29.5
	Sophomore (SO): 30 to 59.5
	Junior (JR): 60 to 89.5
	Senior (SR): 90 or more

Glossary

Part 4

Term	Definition/Description
Student FTE	"FTE" stands for full-time-equivalent. For undergraduates is the sum of all undergraduate part-time units divided by 12 (total part-time undergraduates FTE) and the head count of full-time undergraduate students. Similarly, the sum of all graduate part-time units divided by 9 (total part-time graduates FTE) and the head count of full-time graduate students is FTE for graduates.
Student-to-faculty ratio	The ratio of FTE students to FTE instructional staff, i.e., students divided by staff.
TRAD or Trad	Traditional Semester Undergraduate Students
Transfer Student (new transfer to HNU)	A student entering HNU for the first time but known to have previously attended another college or university at the same level (e.g., undergraduate).
UG Special Status	This is a group of non-degree-seeking students that are taking classes at undergraduate level.